



"West Indies" Elevation

~ Available In Several Front Elevation Styles ~
Gold Coast Custom Homes Has Perfected The Process Of Delivering High Quality Custom Homes For Our Clients. Our Isabella Plan Is Perfect For Estate Size Properties In Gated Communities And On Your Private Land. With 3950 Living Sqft, This Custom Home Features An Expansive Open Great Room Concept Designed For Larger Families And Entertaining. With 4 Bedrooms, 4.5 Baths, A Study And A Den, This Custom Home Can Be Easily Modified To Fit Your Preferences And Life Style. Our Homes INCLUDE Many Upgrades Standard: 11'-12'+ Ceilings In The Main Areas, (3) Tray Ceilings, Brick Pavers, Large Island In Kitchen Maple Cabinetry W. Crown Molding, Light Rail In The Kitchen, Plus Much, More! Call Today To Discuss The Next Steps in Building Your Dream Home.



"Florida Coastal" Elevation



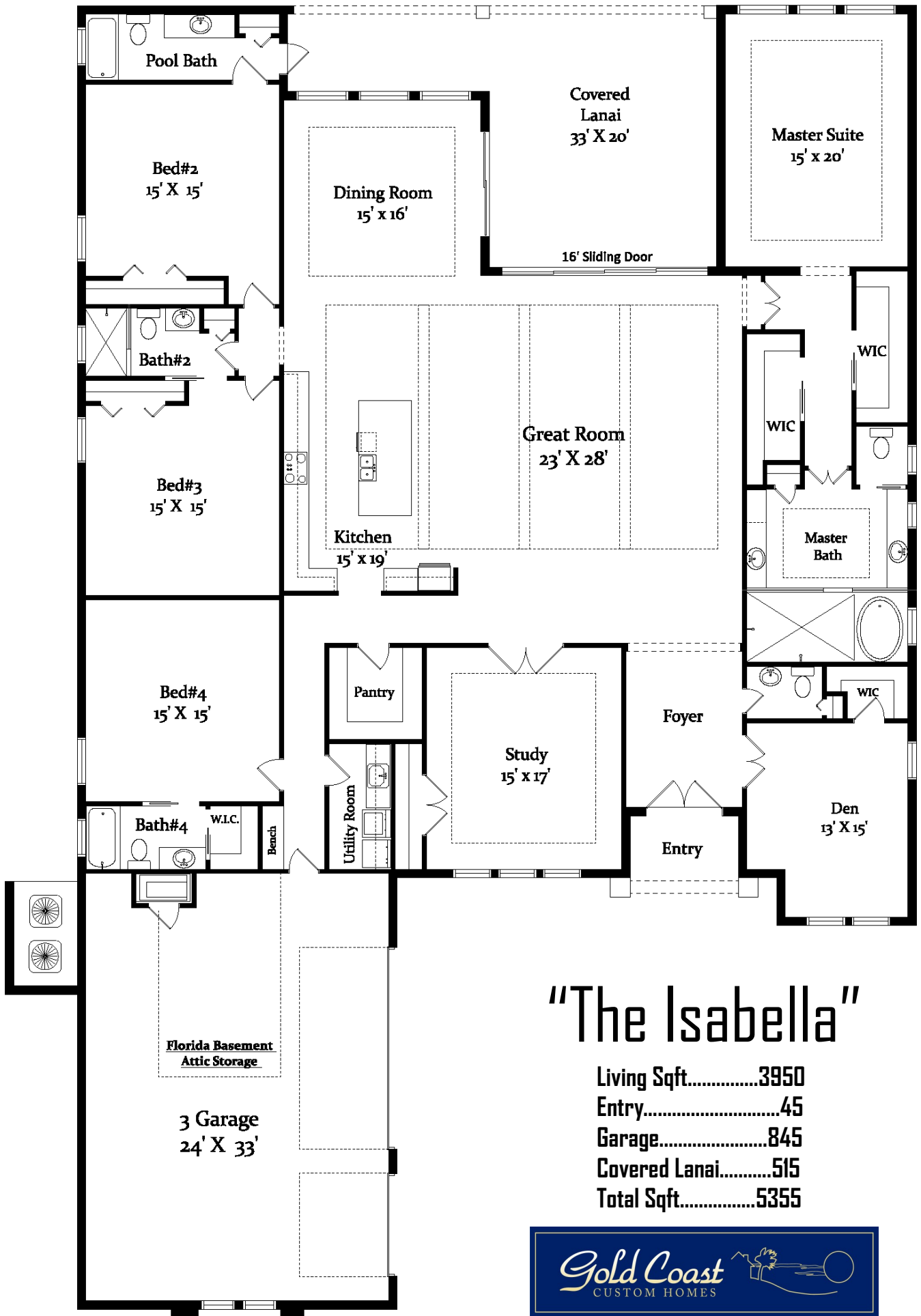
"Modern Coastal" Elevation



386.313.6221

" The Isabella "

www.GoldCoastCustomHomes.com



"The Isabella"

Living Sqft.....	3950
Entry.....	45
Garage.....	845
Covered Lanai.....	515
Total Sqft.....	5355



CGC1507791 Gold Coast Custom Homes © 2023 All Photographs, elevation renderings, floor plans and square footages are for representation purposes only and may not reflect the exact dimensions or features of your home. All dimensions, floor plans, elevations, square footages, features, specifications, prices and product types are subject to change without notice or obligation. All Gold Coast Custom Homes floor plans and elevations may be subject to copyright protection. Any reproduction or use of this brochure material without written permission from Gold Coast Custom Homes is strictly prohibited.