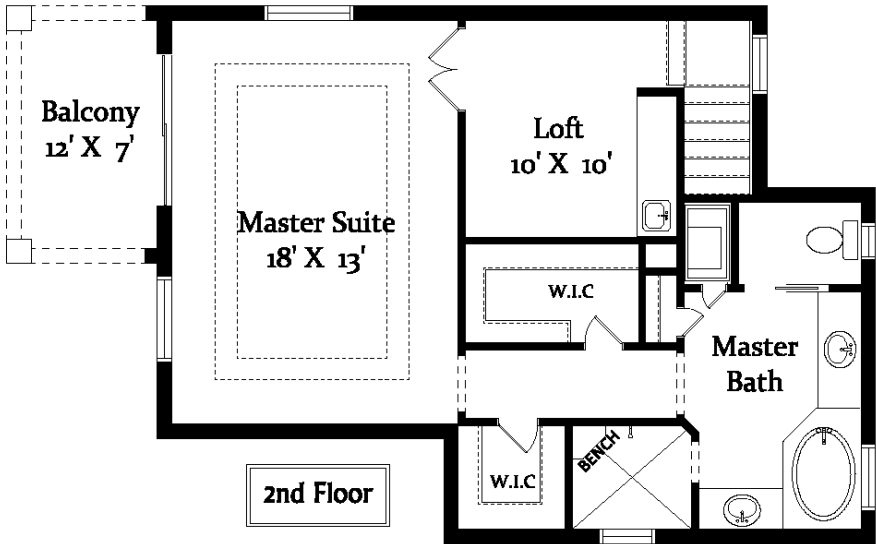


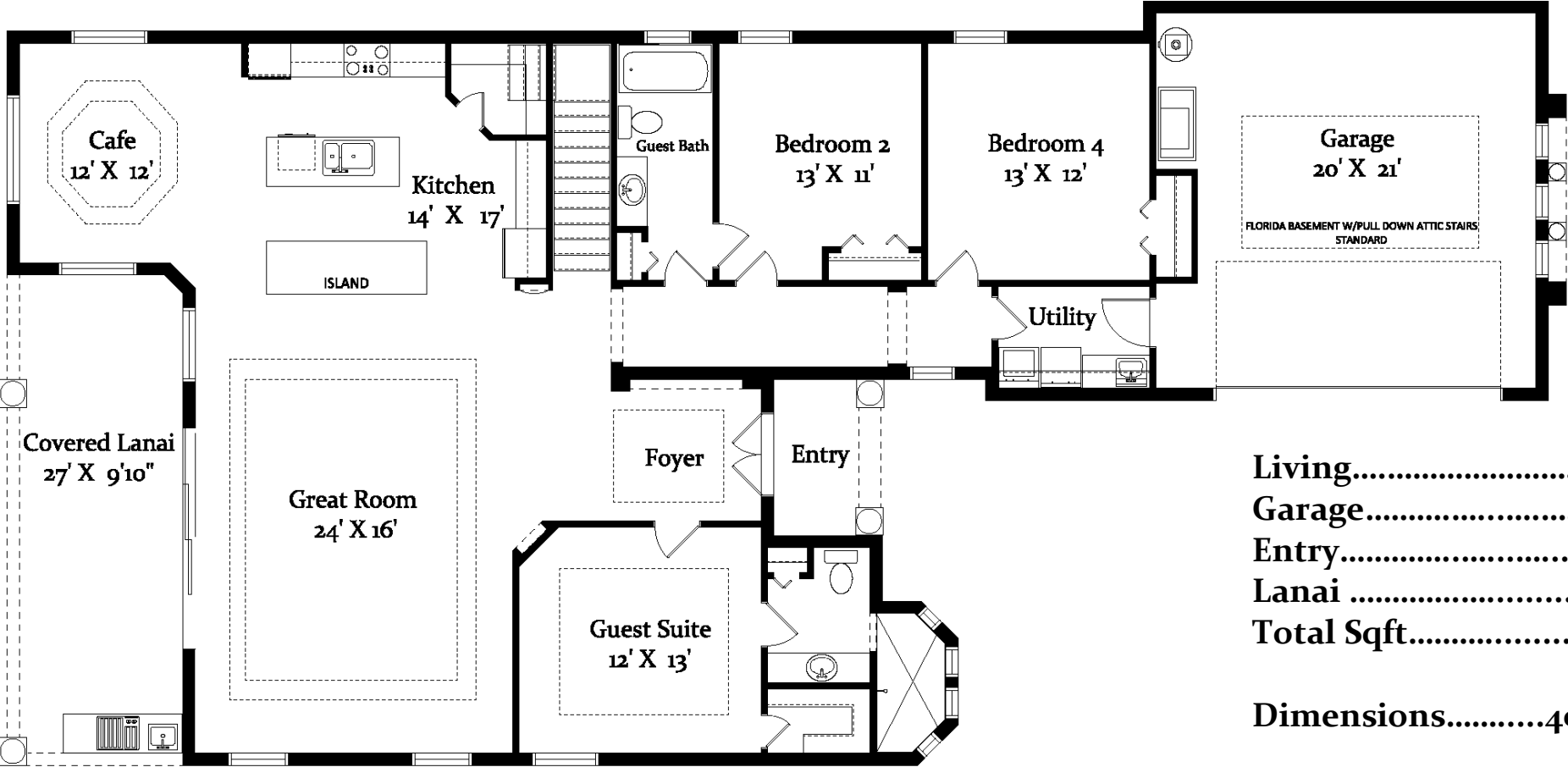


"The Renaissance"

4 BEDROOMS 3 BATH 2 CAR GARAGE



2nd Floor



Living.....	2630
Garage.....	470
Entry.....	50
Lanai	290
Total Sqft.....	3440
Dimensions.....	40' x 88'

Pricing does not include summer kitchens and additional decorative ceiling details (per plan). Renderings are artists conception and should not be relied upon for accuracy. All floor plan dimensions are approximate. Brand names and materials are subject to change. All Plans are owned and copyrighted by Gold Coast Custom Homes and may not be duplicated © Copyright 2017 CGC 1507791