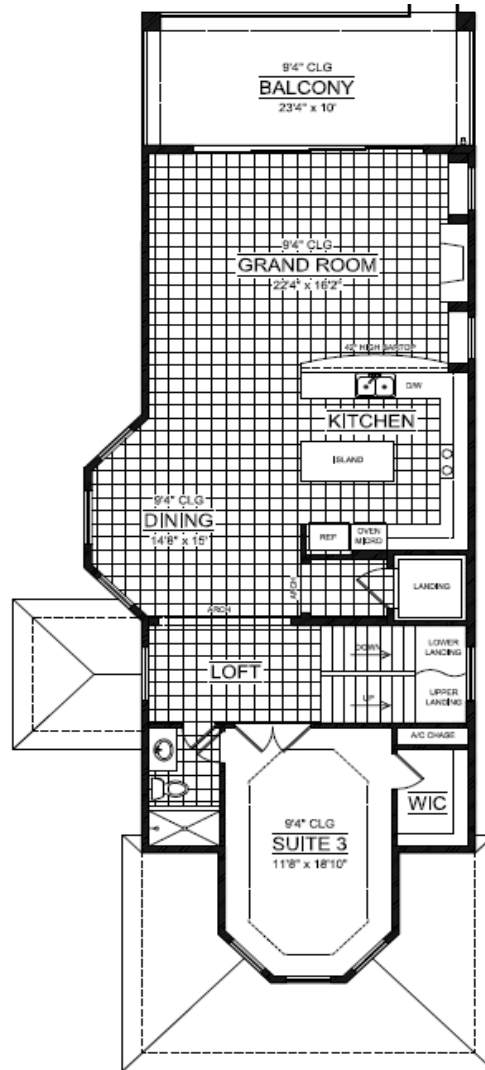
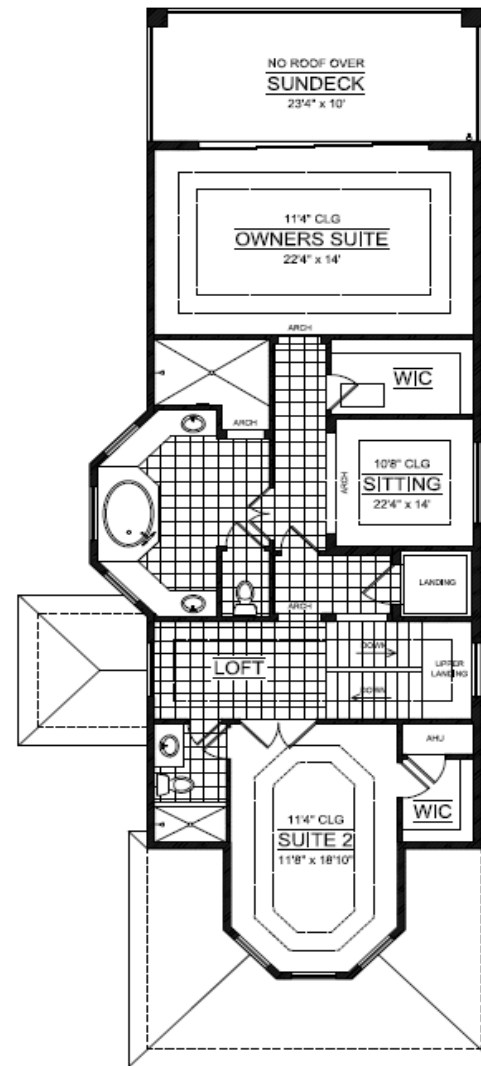


1st FLOOR



2nd FLOOR



3rd FLOOR



"The Bridgehampton"

3+ BEDROOMS 4 BATH 2 CAR GARAGE

Living.....	3828
Garage.....	583
Entry.....	58
Lanai	787
Total Sqft.....	5226

Dimensions.....30' x 76'

Pricing does not include summer kitchens and additional decorative ceiling details (per plan). Renderings are artists conception and should not be relied upon for accuracy. All floor plan dimensions are approximate. Brand names and materials are subject to change. All Plans are owned and copyrighted by Gold Coast Custom Homes and may not be duplicated © Copyright 2017 CGC 1507791