



"Coastal" Elevation

~ Available In Several Front Elevation Styles~
Gold Coast Custom Homes Has Perfected The Process Of Delivering High Quality Custom Homes To Our Clients. Our St Lucia Plan Comes Includes 2420 Living Sqft, 3 Bedrooms, 3 Baths, Plus A Study. This Easily Customizable Floor Plan Is Perfect For A Narrow & Shorter Property. Our Homes INCLUDE Many Upgrades Standard: 11'-12'+ Ceilings In The Main Areas, (3) Tray Ceilings, Brick Pavers, Large Island In Kitchen, High Quality Tile In A The Main Areas, Custom 42" Maple Cabinetry W. Crown Molding & Light Rail In The Kitchen, Crown Molding Plus Much, Much More! Call Today To Discuss The Next Steps In Building Your Dream Home.



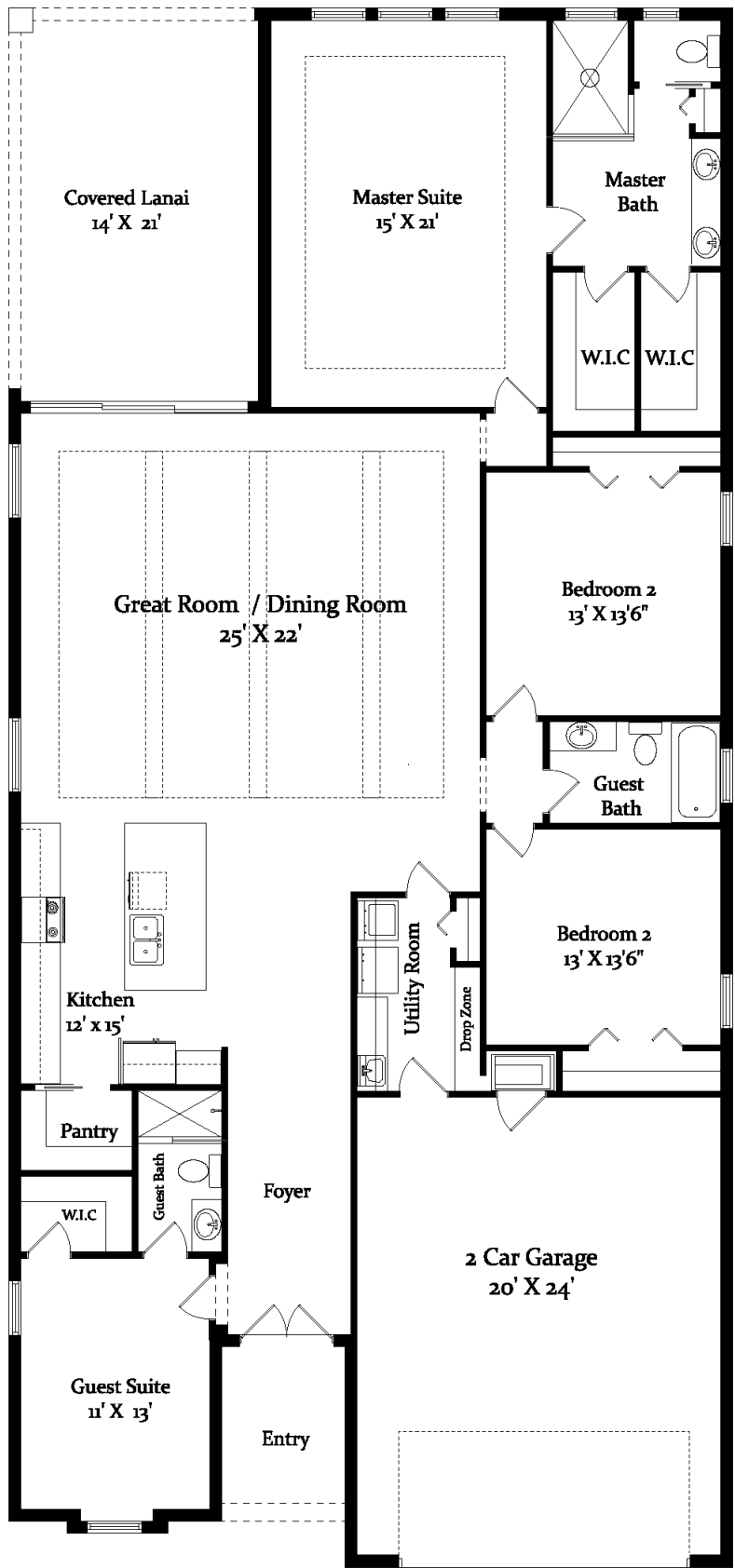
"West Indies" Elevation



386.313.6221

"The St. Lucia Plan"

www.GoldCoastCustomHomes.com



Living Sqft.....2420
 Entry.....85
 Garage..... 525
 Covered Lanai.....321
 Total Sqft..... 3351



"The St. Lucia"