



"Florida" Elevation

~Available In Several Front Elevation Styles~
Gold Coast Custom Homes Has Perfected The Process Of Delivering High Quality Custom Homes For Our Clients. Our San Tropez Plan Features A Formal Dining Room With An Open Great Room Layout. With 2200 Living Sqft, This Well Designed 3 Bedroom 3 Bath With Study Is Ideal For A Wider Properties Within Palm Coast. Our Homes INCLUDE Many Upgrades Standard: 11'-12'+ Ceilings In The Main Areas, (3) Tray Ceilings, Brick Pavers, Large Island In Kitchen, High Quality Tile In Main Areas of Home, Custom 42" Maple Cabinetry W. Crown Molding, Light Rail In The Kitchen, Plus Much, Much More!
Call Today To Discuss The Next Steps in Building Your Dream Home.



"West Indies" Elevation



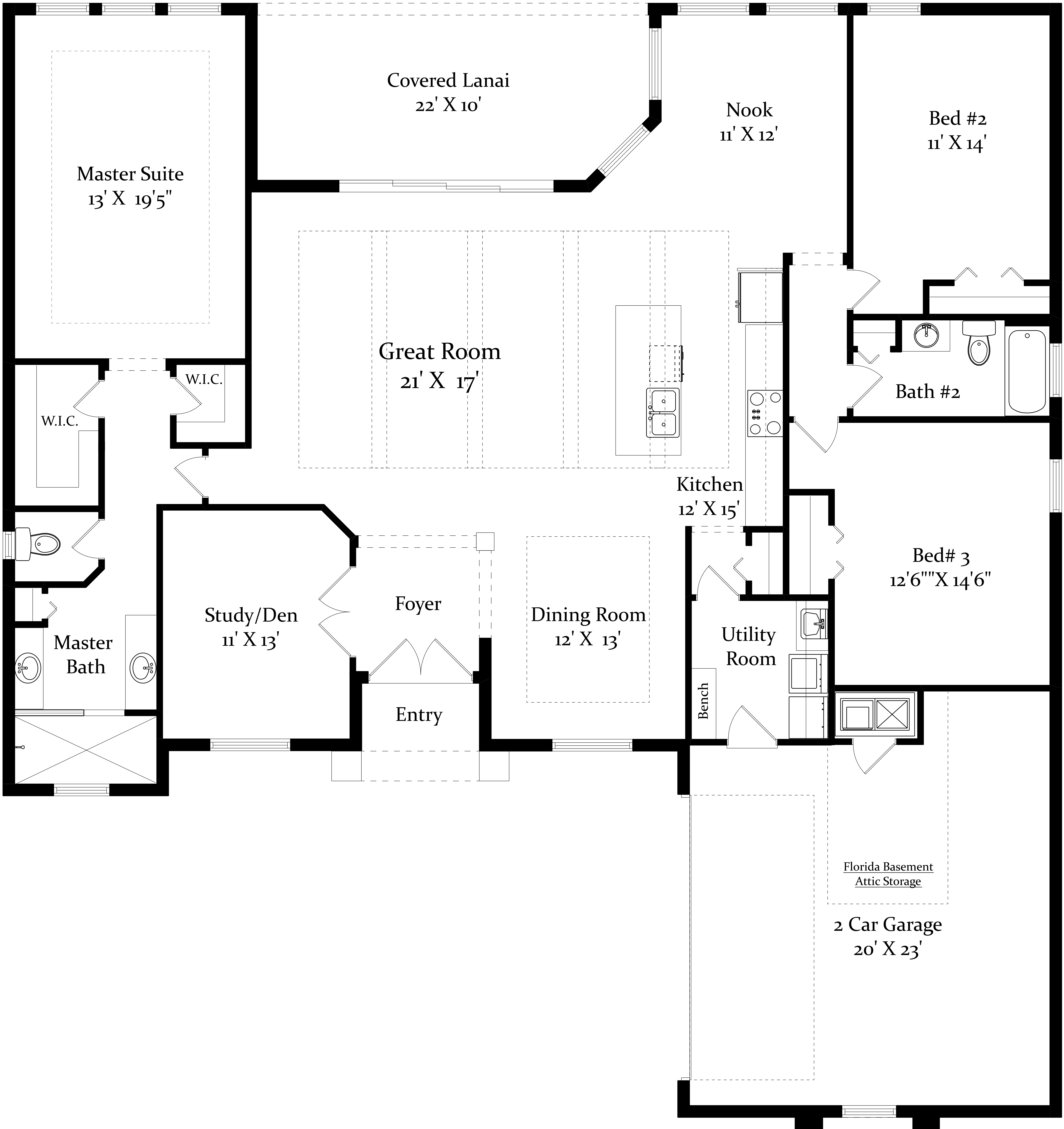
"Tuscan" Elevation



"The San Tropez Plan"

386.313.6221

www.GoldCoastCustomHomes.com



Master Suite
13' X 19'5"

Covered Lanai
22' X 10'

Nook
11' X 12'

Bed #2
11' X 14'

Great Room
21' X 17'

Bath #2

Kitchen
12' X 15'

Bed #3
12'6" X 14'6"

Study/Den
11' X 13'

Foyer

Dining Room
12' X 13'

Utility Room

Master Bath

Entry

Bench

Florida Basement
Attic Storage

2 Car Garage
20' X 23'