



"Portofino" Elevation

~ Available In Several Front Elevation Styles ~
 Gold Coast Custom Homes Has Perfected The Process Of Delivering High Quality Custom Homes To Our Clients. Our Hibiscus Model Checks All The Boxes When It Comes To Maximizing Space. This Well Crafted Award Winning Open Great Room Design Comes With 2401 Living Sqft, 3 Bedrooms, 3 bath, Plus A Study. Our Homes INCLUDE Many Upgrades Standard: 11'-12'+ Ceilings In The Main Areas, (3) Tray Ceilings, Brick Pavers, Large Island In Kitchen, High Quality Tile In The Main Areas, Custom 42" Maple Cabinetry W. Crown Molding & Light Rail In The Kitchen, Crown Molding Plus Much, Much More! Call Today To Discuss The Next Steps In Building Your Dream Home.



"Modern Coastal" Elevation



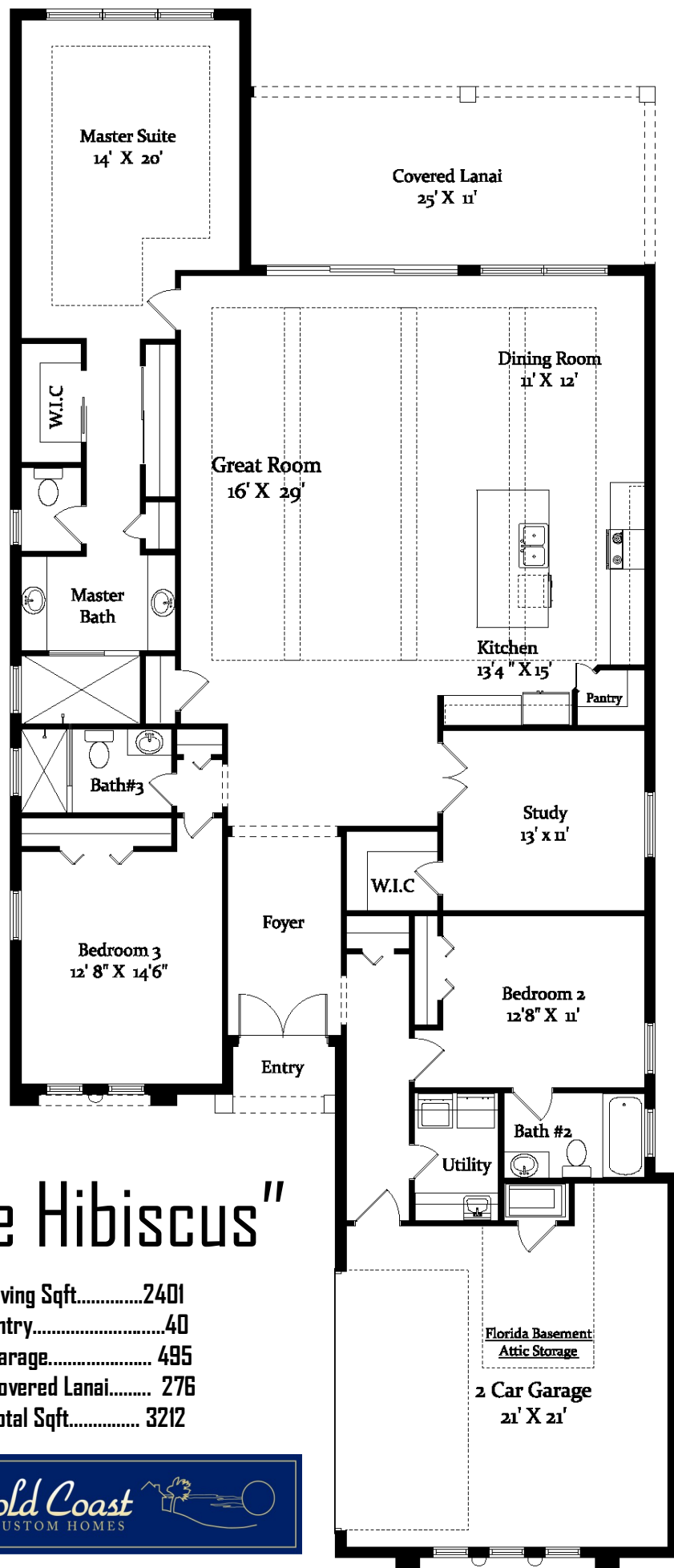
"West Indies" Elevation



"The Hibiscus Plan"

386.313.6221

www.GoldCoastCustomHomes.com



"The Hibiscus"

Living Sqft.....2401
 Entry.....40
 Garage..... 495
 Covered Lanai..... 276
 Total Sqft..... 3212

