



"Florida" Elevation



"Coastal" Elevation

~ Available In Several Front Elevation Styles ~
Gold Coast Custom Homes Has Perfected The Process Of Delivering High Quality Custom Homes For Our Clients. Our "Hampton Bay" Plan Is With 2040 Living Sqft, This Open Great Room Plan Features 3 Bedroom 2 Bathrooms With A Study All Our Homes INCLUDE Many Upgrades Standard: 11' - 12'+ Ceilings In The Main Areas, (3) Tray Ceilings, Brick Pavers, Large Island In Kitchen, High Quality Tile In Main Areas of Home, Custom 42" Maple Cabinetry W. Crown Molding, Light Rail In The Kitchen, Plus Much, Much More! Call Today To Discuss The Next Steps In Build-ing Your Dream Home.

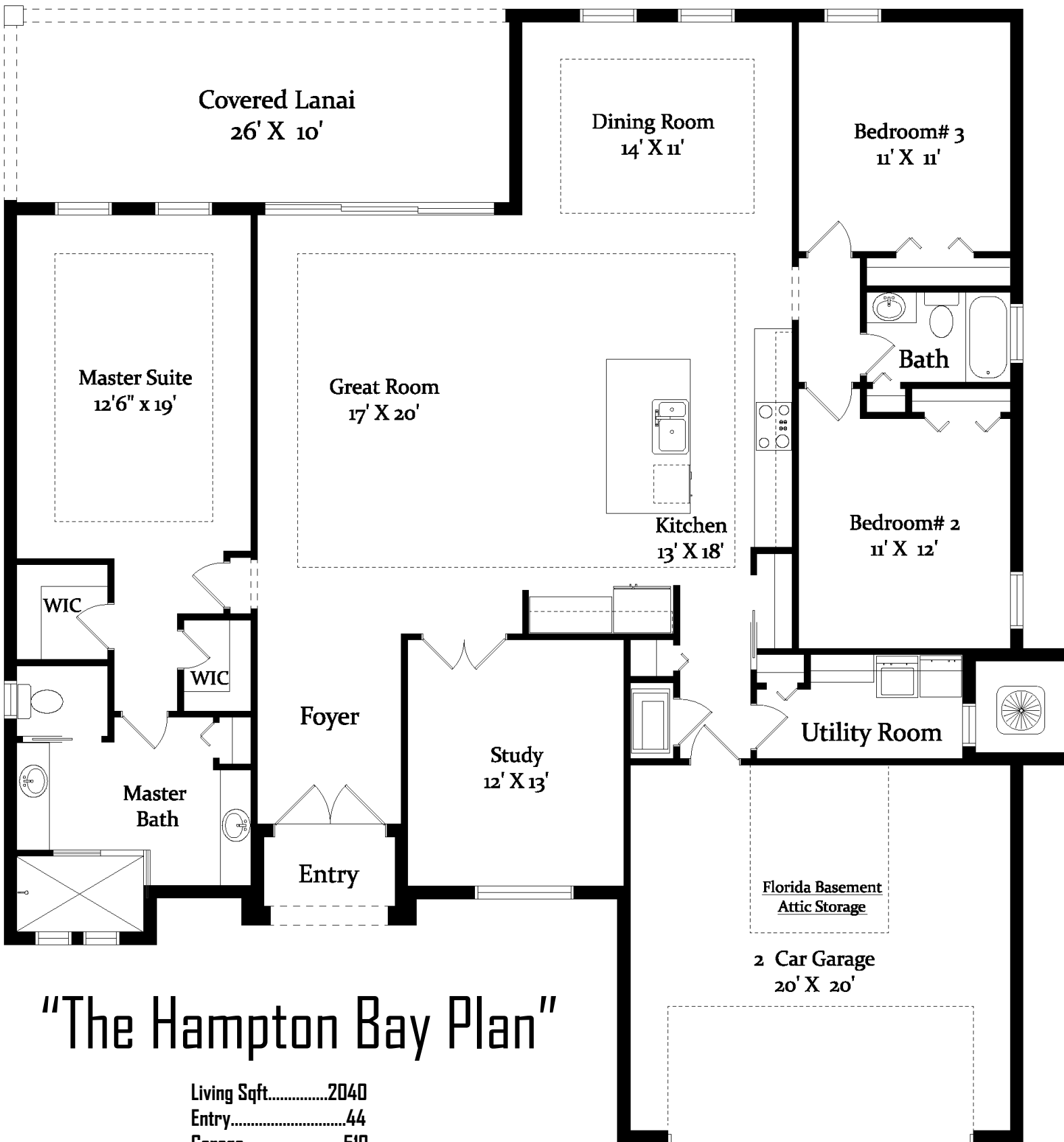
Gold Coast
CUSTOM HOMES



"The Hampton Bay Plan"

386.313.6221

www.GoldCoastCustomHomes.com



"The Hampton Bay Plan"

Living Sqft.....2040
 Entry.....44
 Garage.....510
 Covered Lanai.....240
 Total Sqft.....2834

